

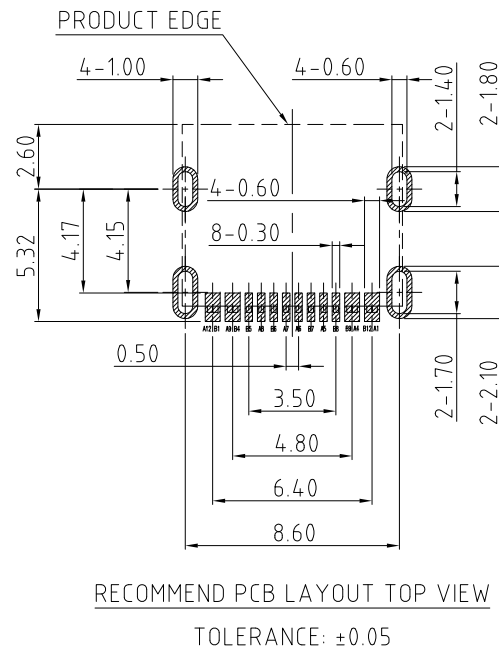
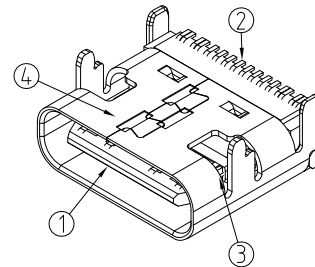
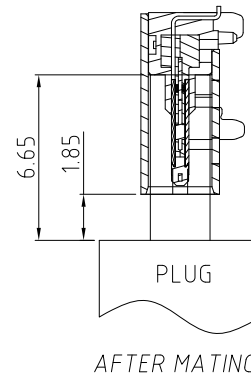
REV.	DESCRIPTION	DATE
A	RELEASE	Nov 17, 2021

NOTE:

- MATERIAL SPECIFICATION:
  - HOUSING: HIGH TEMPERATURE RESISTANT PLASTIC, UL94 V-0.
  - CONTACTS: COPPER ALLOY.
  - MID PLATE: STAINLESS STEEL.
- PLATING SPECIFICATION:
  - CONTACTS:
    - Ni 50u" MIN. UNDER PLATED OVER ALL.
    - Au PLATED ON THE FUNCTIONAL AREA OF CONTACT.
  - FRONT SHELL:
    - Ni 30u" MIN. UNDER PLATED OVER ALL.
- MECHANICAL PERFORMANCE:
  - INSERTION FORCE: 0.5~2.0kgf.
  - REMOVAL FORCE: 0.8kgf~2.0kgf.
  - DURABILITY: 10000 CYCLES.
- ELECTRICAL PERFORMANCE:
  - CURRENT RATING: 5A.  
VOLTAGE RATING: 20V.
  - INSULATION RESISTANCE: 100MΩ MIN.
  - DIELECTRIC WITHSTAND VOLTAGE, AC 100V FOR 1 MINUTE.
- ENVIRONMENTAL PERFORMANCE:
 

OPERATING TEMPERATURE: -30° C~+80° C.
- IR REFLOW:
 

THE PEAK TEMPERATURE ON THE BOARD SHALL BE MAINTAINED FOR 10 SECONDS AT 260° C.



PART NUMBER INFORMATION :

230F816-XN110S-X

SERIES CODE  
SMT 90°  
FEMALE  
TYPE C  
NUMBER OF POSITIONS

R:RoHS  
H:HALOGEN FREE  
FOLLOW NUMBER  
BOARD TYPE  
NICKEL PLATED  
PLATING SEE TABLE

A1	GND
A4	VBUS
A5	CC1
A6	DP1
A7	DN1
A8	SBU1
A9	VBUS
A12	GND
B12	GND
B9	VBUS
B8	SBU2
B7	DN2
B6	DP2
B5	CC2
B4	VBUS
B1	GND
PIN	SIGNAL NAME

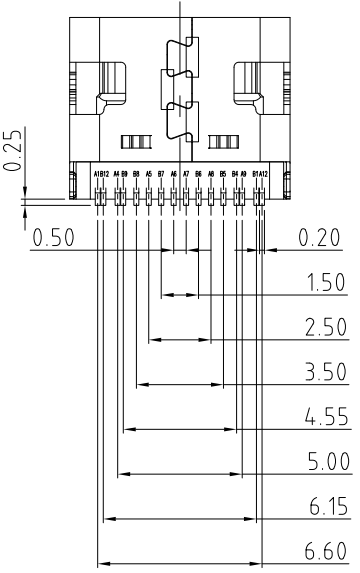
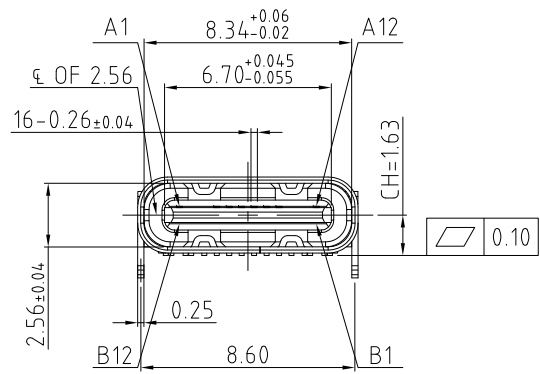
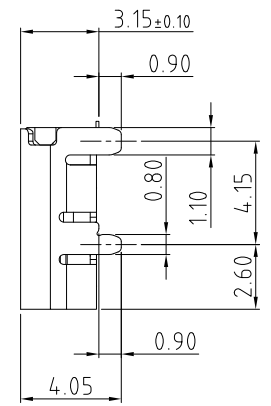
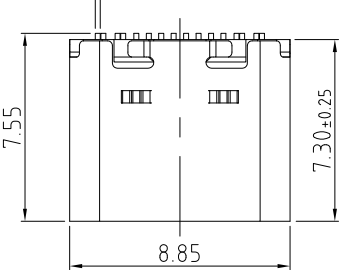
DESCRIPTION OF PLATING ON TERMINALS			
NO.	EXPLAIN	NO.	EXPLAIN
0	GOLD FLASH	3	GOLD 15u"
1	GOLD 5u"	4	GOLD 20u"
2	GOLD 10u"	H	G/F + TIN'

TOLERANCE .0=±0.25 .00=±0.20 .000=±0.10 ANG.=±2'	DRAWER <b>ZU</b> CHECK <b>ZU</b> APP'D <b>HLWX</b>	<b>INMO</b> 东莞市英墨电子有限公司 INMO Electronics Co.,Ltd		
 UNITS : mm	NAME TYPE C 16 Pin 母座 L7.30 卧贴 4插 无柱			
SCALE 1:2	SIZE A6	SHEET 1 OF 1	REV. B	DRAW NO. R230F816-XN110S-X

F  
E  
D  
C  
B  
A

1 2 3 4 5 6 7 8

16-0.20±0.05



1 2 3 4 5 6 7 8